



BMP®21-LAB Label Printer Where pens fail, labels succeed!

When it comes to in-the-lab labeling, illegible or smeared writing is not an option. With the powerful and affordable BMP®21-LAB printer on hand, you can rely on crisp, long-lasting labels and inks that are built to withstand harsh lab environment. Once you experience the built-in symbols, durable labels and vial/tube auto-sizing capabilities of the BMP®21-LAB printer, you'll never use a pen for your lab labeling needs again.

| Printer: | |
|-----------------------------------|---|
| Printer Name | BMP®21-LAB Label Printer |
| Print Resolution | Thermal transfer, 203 dpi |
| Max Lines of Print | 4 |
| Print Speed | 10mm/sec (0.4 in/sec) |
| Keyboard Type | ABC |
| Dimensions: | 9.5" x 2.5" x 4.5" (236.22 x 63.5 x 114.3 mm) |
| Weight | 1.66 lbs (0.75 kg) (with AA Alkaline Batteries and Media Roll) |
| Warranty | 2 Years |
| Overmold/Rugged | Yes |
| Operating Temp | 4° to 43° C (40° to 110° F) |
| Humidity | 10% to 90% (non-condensing) |
| Storage Temp | -18° to 43° C (0° to 110° F) |
| Continuous or Die Cut Labels | Continuous Labels Only |
| Portability | Yes |
| Features: | |
| Memory | 16MB, 10 Labels (2MB available for storage) |
| User Profiles | No |
| Cutter Type | Straight cut, single hand manual actuate |
| Cut Options | Cut between labels or at end of print job |
| Label Retention After Cut | Yes |
| Labels Per Day (Average) | 100 |
| Battery Life Indicator | Yes |
| Label Odometer (Supply Remaining) | No |
| Wearability Options | Magnet Attachment, Multi-Tool (Magnet / Flashlight / Stand Combo) and Lanyard |
| Drop Test | Transit drop per MIL-STD-810G 5.16.6 S4.6.5 Drop tested: 6 foot drop |
| Languages | English, Dutch, German, Italian, French, Spanish Portuguese |
| Units | Inches or millimeters |

Specifications subject to change without notice.

| Power: | |
|-----------------------------------|--|
| Power Supply | 6 AA batteries, AC adapters: US 110V, UK 240V, Europe 220V, or Lithium Ion Rechargeable Battery |
| Battery Included | No |
| Battery Life | Li-ION Battery: Output of 2000 2" (50.8mm) labels 6 AA Batteries: Output of 1800 2" (50.8mm) labels |
| Rechargeable Battery | Lithium Ion 11.7Wh (DC 7.2V 1620 mA/H) |
| Charging Options | External via AC |
| Re-Charge Time (estimated) | 2.5 hours |
| Power Source Voltage | 110-240 |
| Auto Shut Off | 10 minutes |
| Print Functions: | |
| Wire and Cable Wrap Mode | No |
| Cable Flag Mode | No |
| Terminal Block Mode | No |
| Patch Panel Mode | No |
| Circuit Breaker Mode | No |
| Vial Mode | Yes |
| Banner (Landscape) | Yes |
| Banner (Portrait) | Yes |
| Print Preview | No |
| Multi-Label View | No |
| Customizable Library | No |
| Serialization | Yes |
| Barcoding | 39 and 128 |
| Date/Time Stamp (Real Time Clock) | Yes |
| Fixed Length | Yes |
| Mirror Print | No |
| Vertical Print | Yes |
| Reverse Print | No |
| Rotate Print | No |
| Auto Format | Yes |
| Text Justification | Horizontal: Center Vertical: Center |

BMP®21-LAB Label Printer Specifications (continued)

| Print Functions: (continued) | |
|--|---|
| Multi-Copy Printing | Up to 99 Copies |
| Multi-Line Print | Yes |
| Frame Feature | No |
| Save Files | Yes |
| Display: | |
| LCD Type / Size | LCD, 2" x 1" (50.8mm x 25.4mm) |
| LCD Resolution | 132 x 64 pixels |
| LCD Characters | 13 char x 3 lines |
| LCD Backlight | Yes, user adjustable |
| Communication and Interface | |
| Connectivity: | Not Applicable |
| PC Connectivity | No |
| Import Data | No |
| Import Manufacturer Templates / Graphics | No |
| Software Compatibility | Not applicable |
| Media: | |
| Type | Cartridge (media and ribbon combined) |
| Load Labels Location | Top |
| Label Output Location | Right Side |
| Compatible Media | M21- Series Cartridges |
| Memory in Cartridge | No |
| Maximum Print Width | 0.63" (16 mm) |
| Maximum Print Length | 36.0" (914.4 mm) |
| Maximum Liner Width | 0.875" (22.2 mm) |
| Media Widths | 0.250", 0.375", 0.500", 0.750" (6.4, 9.5, 12.7, 19.1 mm) |

BMP®21-LAB Label Printer Media Offering

| | |
|----------------------------------|---|
| B-423 Permanent Polyester | ✓ |
| B-427 Self Laminating Vinyl | ✓ |
| B-430 Clear Polyester | ✓ |
| B-461 Clear Polyester | ✓ |
| B-488 High Performance Polyester | ✓ |
| B-499 Nylon Cloth | ✓ |
| B-595 Indoor/Outdoor Vinyl | ✓ |
| B-7425 Polypropylene | ✓ |

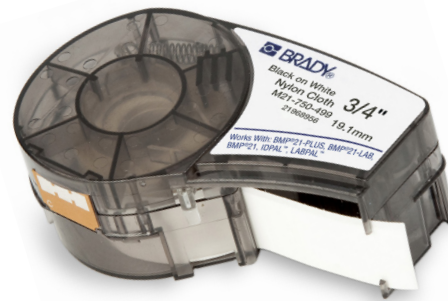
For more information on the
BMP®21-LAB Label Printer and media, visit:
BradyID.com/bmp21lab

Specifications subject to change without notice.

© 2015 Brady Worldwide Inc. ALL RIGHTS RESERVED

| Included Media | M21-750-7425 0.75" x 21" (19.05mm x 6.4m) Black on White Polypropylene Tape |
|-----------------------------|--|
| Number of Stock Parts | 70+ |
| Color Print Capability | Single print color on a label |
| Available Media Colors | Black on: White, Yellow, Clear, Orange, Purple, Brown, Grey. White on: Blue, Green Red, Clear or Black |
| Cartridge Width Detection | Yes |
| Cartridge Setting Detection | Yes |
| Custom Labels Available | No |
| Compliance | |
| Agency Approvals | UL, CE, EAC, FCC Class B, ICES-003, NOM, RCM |
| RoHS compatibility | Pass 2011/65/EU |
| Patents | One or more patents apply including: US 8.322.936; 6.604.874; 6.732.619 |
| Trade | Harmonization Code (HTS Schedule A or B) / 844.39.9000; Country of Origin: Malaysia (printer); ECCN: EAR99 |
| MSDS | For Battery MSDS visit www.BradyID.com |
| Fonts, Graphics, Symbols | |
| Text Sizes | 6-40 pt with Autosizing |
| Text Attributes | Regular, Bold |
| Number of Fonts | (1) Brady Standard Font |
| Number of Symbols | 51 |
| Symbol Categories | Arrows, Greek, Misc, Warning |

Compatible Media: M21-Series Cartridges



USA

Customer Service: 1-888-272-3946
Inside Sales: 1-888-311-0775
www.BradyID.com

Canada

Customer Service:
1-800-263-6179
www.BradyCanada.ca

Mexico

1-800-262-7777
Inside Sales: 1-800-262-7777 ext 177
www.BradyLatinAmerica.com

 **BRADY**
WHEN PERFORMANCE MATTERS MOST™